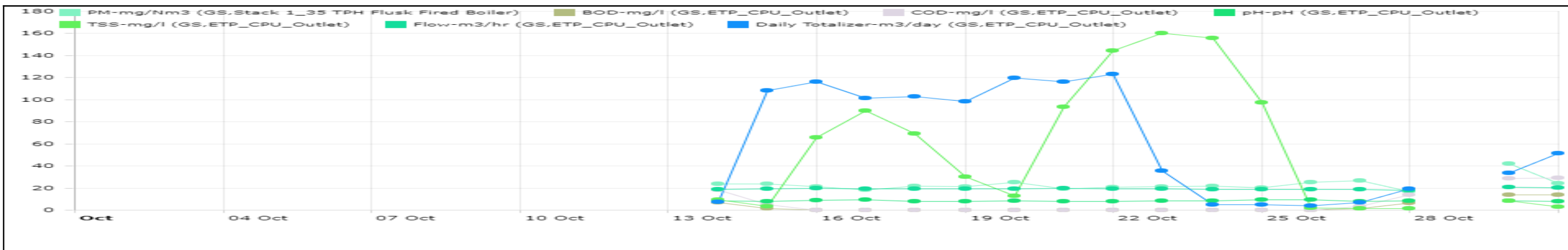


**Forbes Marshall
Multi Station Report**

From : 01-10-2020 00:00:00 **To :** 31-10-2020 23:59:59
Interval : Daily **Function :** Average

Maximum 10 parameters can be exported in pdf format.



Flag legends: < - Average with less data, C - Calibration mode, M - Maintenance mode, S - Data under scrutiny, B - Bad data, H - High permissible limit crossed, L - Low permissible limit crossed, P - Processed Data, V - Corrected Data, D - Delayed Data.

Calender	PM Avg	BOD Avg	COD Avg	pH Avg	TSS Avg	Flow Avg	Daily Totalizer Avg			
Plant	GS	GS	GS	GS	GS	GS	GS			
Station	Stack 1_35 TPH Flusk Fired Boiler	ETP_CPU_Outlet	ETP_CPU_Outlet	ETP_CPU_Outlet	ETP_CPU_Outlet	ETP_CPU_Outlet	ETP_CPU_Outlet			
Units	mg/Nm3	mg/l	mg/l	pH	mg/l	m3/hr	m3/day			
Range	0 - 50	0 - 100	0 - 250	5.5 - 9	0 - 100		0 - 1205			
14-10-2020 00:00:00	23.66 <	6.93 < R	18.15 < H	8.48 < RLH	9.55 < H	18.62 <	7.44 P			
15-10-2020 00:00:00	23.78 < H	1.67	4.72	8.11	3.62	19.40	108.46 P			
16-10-2020 00:00:00	21.17 < H	0.00	0.01	8.93 H	65.89 H	19.56	116.24 P			
17-10-2020 00:00:00	18.25 < H	0.00	0.00	9.51 H	89.83 H	19.28	101.52 P			
18-10-2020 00:00:00	21.85 < H	0.00	0.00	8.13	69.11 H	19.25	103.08 P			
19-10-2020 00:00:00	21.30 < H	0.04	0.24	8.14	30.26	19.08	98.23 P			
20-10-2020 00:00:00	25.33 < H	0.04	0.22	8.57 H	12.83	19.53	119.73 P			

Calender	PM Avg	BOD Avg	COD Avg	pH Avg	TSS Avg	Flow Avg	Daily Totalizer Avg			
Plant Station	GS Stack 1_35 TPH Flusk Fired Boiler	GS ETP_CPU_Outlet	GS ETP_CPU_Outlet	GS ETP_CPU_Outlet	GS ETP_CPU_Outlet	GS ETP_CPU_Outlet	GS ETP_CPU_Outlet			
Units Range	mg/Nm3 0 - 50	mg/l 0 - 100	mg/l 0 - 250	pH 5.5 - 9	mg/l 0 - 100	m3/hr	m3/day 0 - 1205			
21-10-2020 00:00:00	19.09 < H	0.00	0.00	8.12	93.26 H	19.63	116.25 P			
22-10-2020 00:00:00	20.91 < H	0.00	0.00	8.14	144.39 H	19.22	123.23 P			
23-10-2020 00:00:00	21.16 < H	0.00 <	0.00 <	8.44 < H	160.07 < H	19.16 <	35.37 P			
24-10-2020 00:00:00	21.73 < H	0.00 <	0.00 <	8.37 < H	155.55 < H	18.91 <	5.16 P			
25-10-2020 00:00:00	20.39 < H	0.00 <	0.00 <	9.56 < H	97.48 < H	18.99 <	5.01 P			
26-10-2020 00:00:00	25.07 < H	0.00 <	0.00 <	9.64 < H	2.20 <	18.85 <	4.09 P			
27-10-2020 00:00:00	26.72 H	1.39 <	3.41 <	8.14 < H	1.27 <	18.75 <	7.04 P			
28-10-2020 00:00:00	16.97 <	6.41 <	14.05 <	8.16 <	1.26 <	17.92 <	19.04 P			
30-10-2020 00:00:00	42.03 < H	13.84 <	28.88 <	8.21 < H	8.45 < H	20.74 <	33.53 P			
31-10-2020 00:00:00	24.31 H	13.99	29.25	8.09	3.05	20.28	51.66 P			

Report Summary

Average	23.16	2.61	5.82	8.51	55.77	19.24	62.06			
Maximum	42.03	13.99	29.25	9.64	160.07	20.74	123.23			
Minimum	16.97	0.00	0.00	8.09	1.26	17.92	4.09			
Std.Deviation	5.51	4.78	10.23	0.55	58.34	0.63	49.36			
Geom.Mean	22.68	0.33	1.28	8.50	20.25	19.24	34.56			
Median	21.73	0.00	0.01	8.21	30.26	19.22	51.66			
Mode	21.16	0.00	0.00	8.13	1.27	20.28	116.25			
Total Active										